

## Dresser B Series Meters

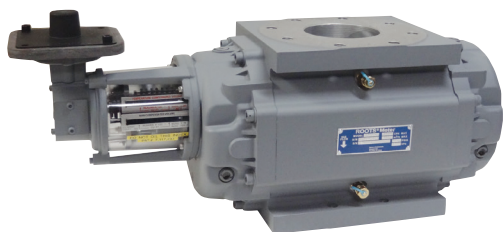
### Dresser Series B3 Line Mount Meters



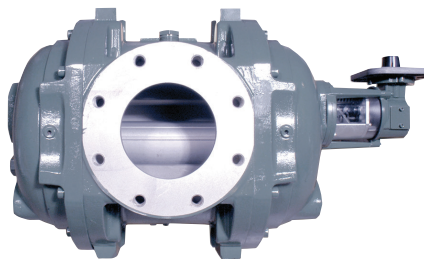
Series B3 8C/11C/15C Meter



Series B3 2M/3M/5M Meter



Series B3 7M/11M/16M Meter



Series B3 23M/38M/56M Meter

### Right Size the Meter to the Application

Series B3 meters are designed to provide accurate gas measurement over widely fluctuating flow, pressure, and temperature conditions. For further versatility, the five smallest meter sizes (8C through 3M) have 2" (50 mm) flanged connections, and a 6-3/4" (171 mm) flange-to-flange dimension.

If application requirements change, this cost-effective feature allows a quick and easy meter exchange without the need to re-pipe the meter set. Other key features include:

- Capacity ratings from 800 CFH to 56,000 CFH (22,6 m<sup>3</sup>/h to 1,585 m<sup>3</sup>/h)
- Maximum operating pressure rating of 175 psig (12 Bar)
- Models 8C through 5M are available with a 200 PSIG (13,8 Bar) rating upon request
- Models 8C through 2M are available with a 1-1/2" nipples connections upon request
- Operating temperature range from -40°F to +140°F (-40°C to +60°C)

For operating requirements beyond those listed, please contact your Dresser Natural Gas Solutions (NGS) representative.

#### 23M232 Meter with 4" Flanged Connection

Our 23M232 includes four inch flanged connections and a 232 PSIG (16 bar) maximum working pressure. This design complements our standard six inch 23M175. The 23M232 has a maximum capacity of 385 MSCFH (10,895 Nm<sup>3</sup> per hour) at the rated MAOP of 232 PSI with a base rating of 23,000 CFH. The 23M232 meter is an ideal measurement solution for a wide array of applications.



---

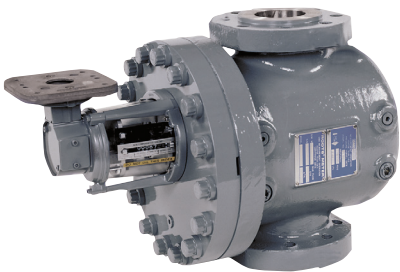
# Dresser High Pressure Meters

## Series B3-HPC (High Pressure Cartridge) Meters

This meter line features a common cast-steel housing for the 1M (1000 ACFH) and 3M (3000 ACFH) sizes as well as the 5M 1480 (5000 ACFH) and 7M 1480 (7000 ACFH) sizes of aluminum cartridges. The 11M1480 meter is the largest of this series. The 1M and 3M meters are available with either an ANSI Class 300# flange rated at 740 psig. MAOP or an ANSI Class 600# flange rated 1480 psig MAOP.

The 5M(5000 ACFH), 7M (7,000 ACFH), and 11M (11,000 ACFH) meters are designed for higher capacity applications with a maximum allowable operating pressure of 1480 psig. The housing is cast steel to meet the demands of the higher flow rates and pressures.

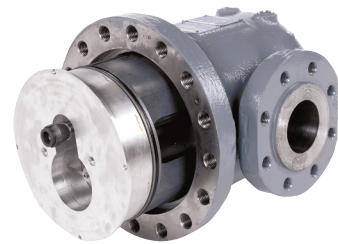
The cartridges are field replaceable and are interchangeable between housings for quick repair and less down-time, regardless of the pressure rating on the housing. As an option, a self-resetting full flow internal bypass is available on new meters and on replacement cartridges for the 1M through 7M sizes. These meters utilize either the Series 3 Mechanical Accessory Units or the Integral Micro Corrector, Model IMCW2.



Series B3-HPC



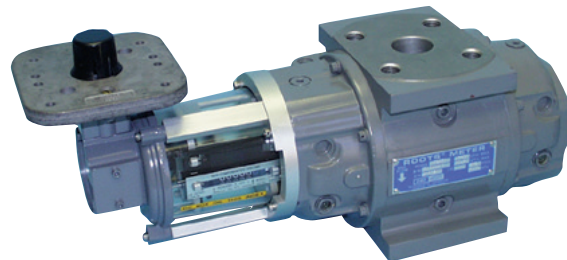
Series B3-HPC with Integral Micro Corrector



Removable B3-HPC Cartridge

## Series B3-HP (High Pressure) Meters

The 1M300 (1000 ACFH) and 3M300 (3000 ACFH) are viable alternatives for pressures up to 300 PSIG. B3-HP meters offer extremely low start and stop rates, compact design with a 6-3/4" flange-to-flange dimension, and a much lower weight than traditional high pressure meters. This is achieved by using aluminum for all major meter components. The Series B3-HP meters mate with ANSI Class 300# FF flanges and are easily installed by one person without the need for a lift or hoist.



---

### Dresser Meters & Instruments

16240 Port Northwest Drive

Houston, TX 77041

T: 1-800-521-1114

F: 1-800-335-5224

*The Dresser Logo and all Trademarks containing the term "Dresser" are the property of Dresser, LLC, a subsidiary of Baker Hughes, a GE Company.*



[www.dresserngs.com](http://www.dresserngs.com)

Dresser Series B3 Meter Fact Sheet NGS.MI.0031a

08.20