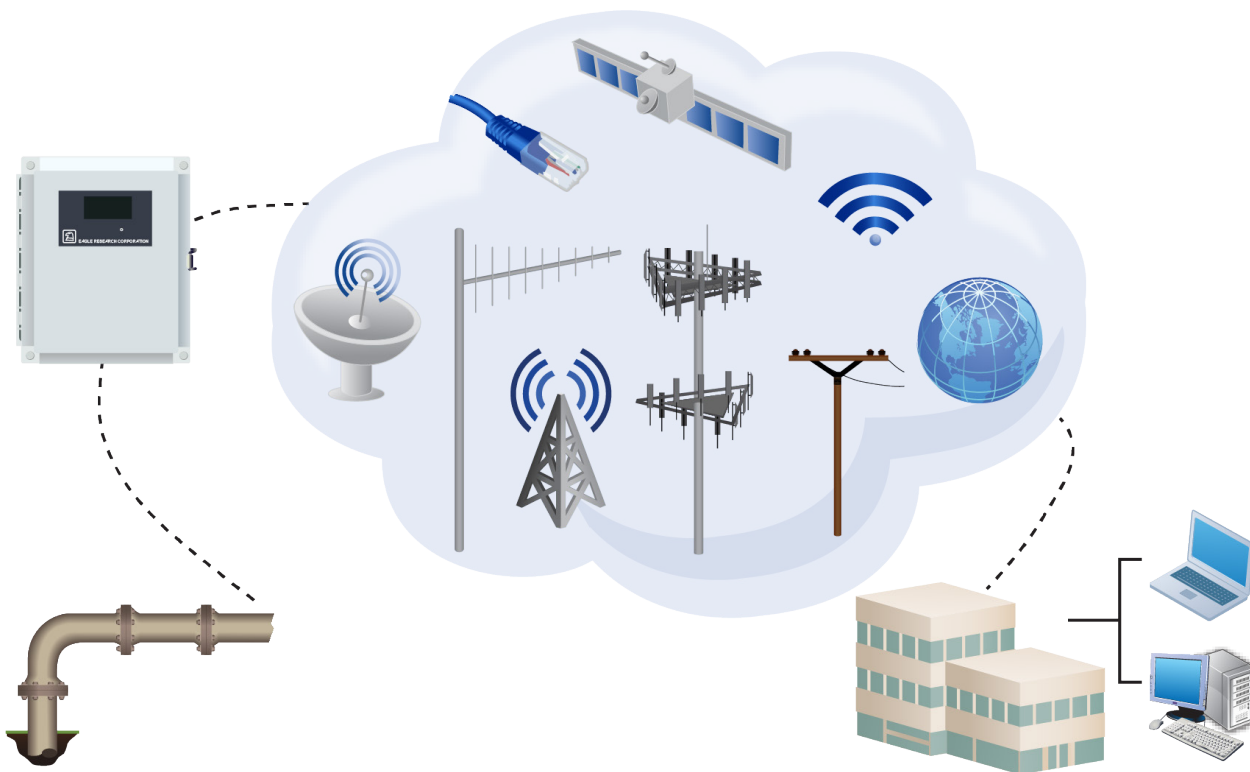


# COMMUNICATIONS

The growth of the wireless communications industry has brought with it a corresponding level of increased complexity in choosing the most efficient and cost effective solution to transfer data from the field to front office. Eagle Research serves as a value added resource in assisting customers in determining what solutions are available, who the available carriers are, and what pricing structure to use for the communications type and frequency of polling. All Eagle Research Corporation® products can be shipped wireless ready and with the wireless device pre-installed to customer specifications.

Many factors determine the choice of wireless communications infrastructure, i.e. frequency of data availability needs and alarms, required antenna choices, and site power requirements. Eagle Research is available to assist its customers with all of their needs and requirements to make the transition to wireless data as seamless and cost effective as possible.



Working with a knowledgeable partner, the operator has numerous options available to improve the bottom line by using tightly integrated TCP/IP and other communication methods. Eagle Research is leading the way in the transition of the natural gas industry to wireless communications. With the addition of our Remote I/O product, wireless sensors of many different types can be implemented. Eagle Research remains on the cutting edge of today's communications technology, filling the void for all industries served. We offer nearly every means of communications as an addition to our hardware platforms to better assist companies in selecting what is best suited.

# TALON™ SOFTWARE FAMILY

Whether the concern is natural gas distribution, gas pipeline transmission, or well head production, the Talon™ family of software gives the users the ability to create a powerful scalable system that meets their specific needs. Its flexible design provides the option to purchase only those modules needed, and the ability to expand a system with additional features by adding new modules with future growth.

## TALON LITE™

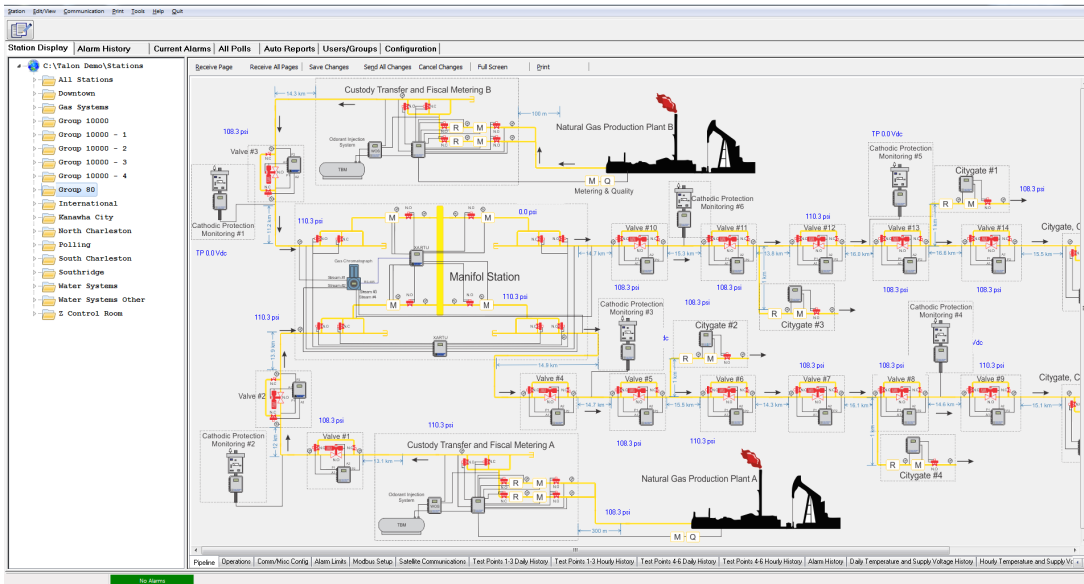
Talon Lite™ is a cost effective, scaled-down version of Talon SCE™, designed for use as a laptop programming tool or for a small scale data collection system.

Site ID	Station Name	Poll #	Poll Name	Port #	Next Time	Last Time	Last Status	Poll Interval
4954	Weese #1110	1	All History Poll	GRP2	03/28/2016 02:30:00PM	03/28/2016 01:43:03PM	Success	0d 1h 0m 0s
6	Stewart Winley	1	All History Poll	GRP2	03/28/2016 02:36:13PM	03/28/2016 02:36:43PM	Failed	0d 1h 0m 0s
55	Chimney Rock Compressor	1	All History Poll	GRP1	03/28/2016 02:36:13PM	03/28/2016 02:31:58PM	Failed	0d 1h 0m 0s
5915	Krow CS Discharge HTR	1	All History Poll	GRP2	03/28/2016 02:36:30PM	03/28/2016 02:35:56PM	Failed	0d 1h 0m 0s
4755	629	1	All History Poll	GRP2	03/28/2016 02:36:31PM	03/28/2016 02:36:00PM	Failed	0d 1h 0m 30s
9566	Golden Creek	1	All History Poll	GRP2	03/28/2016 02:37:25PM	03/28/2016 02:32:24PM	Failed	0d 1h 30m 0s
3080	Back Link CO2-CO2 Truck	3	DH10M	GRP2	03/28/2016 02:45:00PM	03/28/2016 02:30:52PM	Success	0d 1h 15m 0s
3079	CO2-A Middle Unit	3	DH10M	GRP2	03/28/2016 02:45:00PM	03/28/2016 02:31:54PM	Success	0d 1h 15m 0s
3078	CO2-F Front Unit	3	DH10M	GRP2	03/28/2016 02:45:00PM	03/28/2016 02:32:48PM	Success	0d 1h 15m 0s
9632	CFS #1	1	All History Poll	GRP2	03/28/2016 02:47:00PM	03/28/2016 02:32:43PM	Success	0d 1h 15m 0s
706	Waste Treatment	1	All History Poll	GRP1	03/28/2016 02:47:00PM	03/28/2016 02:32:56PM	Success	0d 1h 15m 0s
5250	Hickenbottom #1	1	All History Poll	GRP2	03/28/2016 02:47:00PM	03/28/2016 02:33:39PM	Success	0d 1h 15m 0s
20	QF Compressor	1	All History Poll	GRP2	03/28/2016 02:50:00PM	03/28/2016 02:01:27PM	Success	0d 1h 0m 0s
3702	Boston Whaler	1	All History Poll	GRP1	03/28/2016 03:00:00PM	03/28/2016 11:01:16AM	Success	0d 4h 0m 0s
3701	Sugar Mill	1	All History Poll	GRP1	03/28/2016 03:00:00PM	03/28/2016 11:15:54AM	Success	0d 4h 0m 0s
3723	Hocanda	1	All History Poll	GRP1	03/28/2016 03:00:00PM	03/28/2016 11:24:40AM	Success	0d 4h 0m 0s
3703	S. Atlantic	1	All History Poll	GRP1	03/28/2016 03:00:00PM	03/28/2016 11:30:02AM	Failed	0d 4h 0m 0s
1605	Hankins #3	1	All History Poll	GRP2	03/28/2016 03:00:00PM	03/28/2016 02:00:26PM	Success	0d 1h 0m 0s
1608	Hankins Lumber #	1	All History Poll	GRP2	03/28/2016 03:00:00PM	03/28/2016 02:00:26PM	Success	0d 1h 0m 0s

- Process Programming
- Master Load Creation and Management
- SCADA and Data Collection System Supporting Both Serial and TCP/IP Ports (Incoming and Outgoing)
- Data Trending, Scheduling, and Auto Reporting
- Includes Circular Charting Capability
- Edit Form Text and Graphics Editor

# TALON SCE™ (SINGLE COMPUTER EDITION)

Talon SCE™ is designed to be a full function SCADA/Data collection system for companies not needing an enterprise-wide application, or as a compliment for use with currently deployed systems.

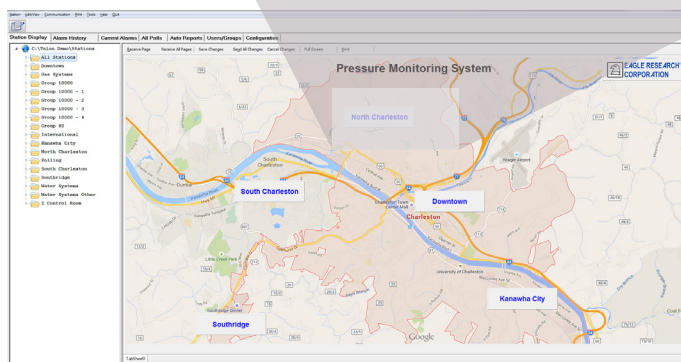
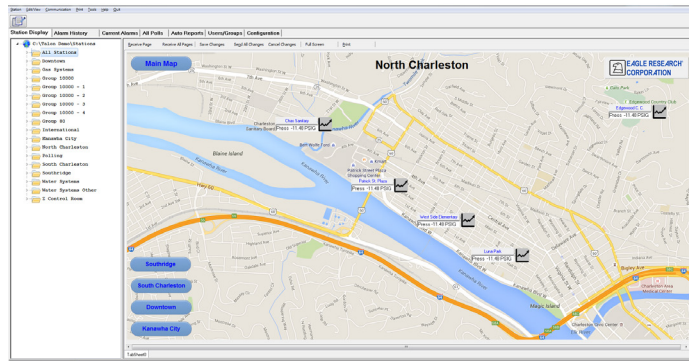


Station Display | Alarm History | Current Alarms | All Polls | Auto Reports | Users/Groups | Configuration

Station Display | Alarm History | Current Alarms | All Polls | Auto Reports | Users/Groups | Configuration

Natural Gas Control

Station	Press	DIP	Mcf/d	Acum	Station	Press	DIP	Mcf/d	Acum
Station 31	320	30.0	1464	558	Station 9	320	30.0	1464	556
Station 32	320	30.0	1464	558	Station 12	320	30.0	1464	557
Sta 32-1	210				Station 42	320	30.0	1464	558
Station 33	320	30.0	1464	558	Station 22	320	30.0	1464	557
Sta 33-1	200				Station 13	320	30.0	1464	557
Station 3	2	0.0	0	0	Station 14	320	30.0	1464	557
Station 1	34	0.0	0	-14	Sta 24-1	295			200
87 Hub	2	0.0	0	0	Station 24	320	30.0	1464	557
Station 4	320	30.0	1464	556	Station 25	320	30.0	1464	557
Sta 1-1	32463	RC 4"	200		Station 23	320	30.0	1464	557
Station 7	119	0.0	0	280	Station 38	320	30.0	1464	558
Station 47	0	0.0	0	0	Station 5	320	30.0	1464	556
Sta 8-1	200				Station 16	320	30		
Station 8	320	30.0	1464	556	Station 15	320	30	1464	557
Station 10	320	30.0	1464	557	Station 17	320	30.0	1464	557
Sta 10-1	200	205			Station 18	320	30.0	1464	557
Station 37	320	30.0	1464	558	Station 20	0	0.0	1	70550
Station 34	320	30.0	1464	558	Sta 20-1	0	205		
Station 11	320	30.0	1464	557	Station 36	320	30		
Sta 11-1	200				Station 19	320	30.0	1464	557
Nich Odor Alarm	Alarm				Station 21	320	30.0	1464	557
Berea Odor Alarm	Alarm				Station 44	320	30.0	1464	558



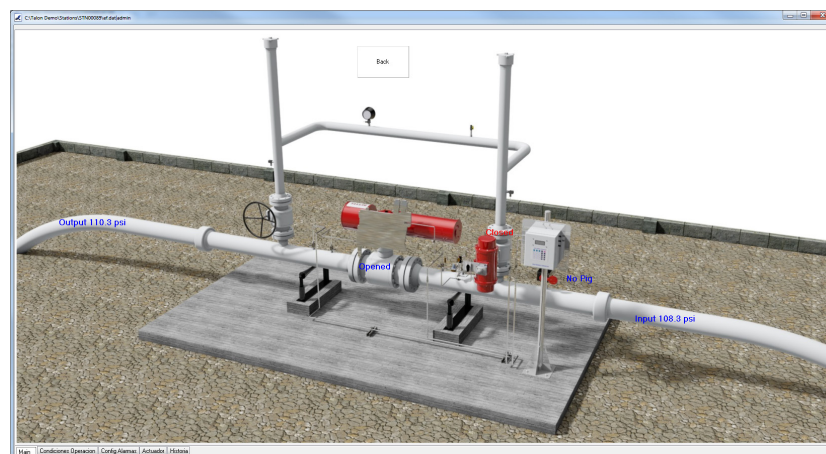
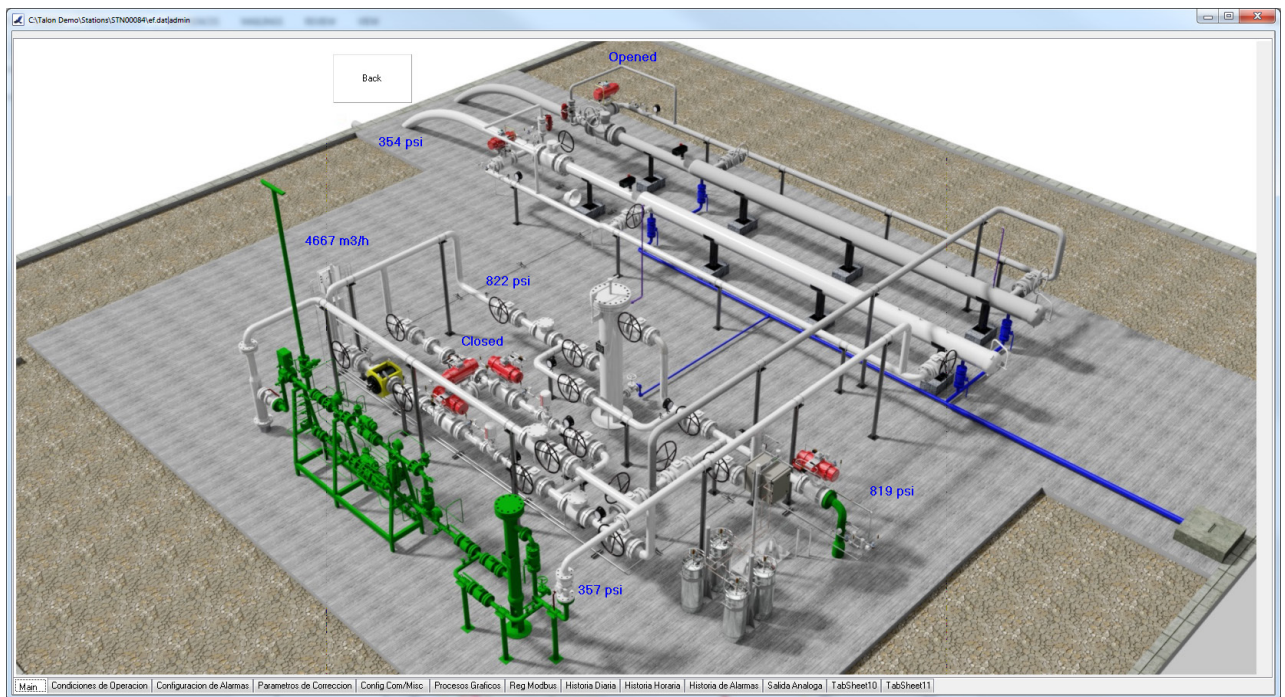
- Single Computer Edition
- SCADA and Data Collection System Supporting Both Serial and TCP/IP Ports (Incoming and Outgoing)
- Expandable Based on Polling Interval Needs
- Data Trending
- Automated Report and Polling Scheduler
- Multi-Pen Historical Quick Trend Graphing
- Alarm Viewer
- Data Import Utility

# TALON ENTERPRISE™

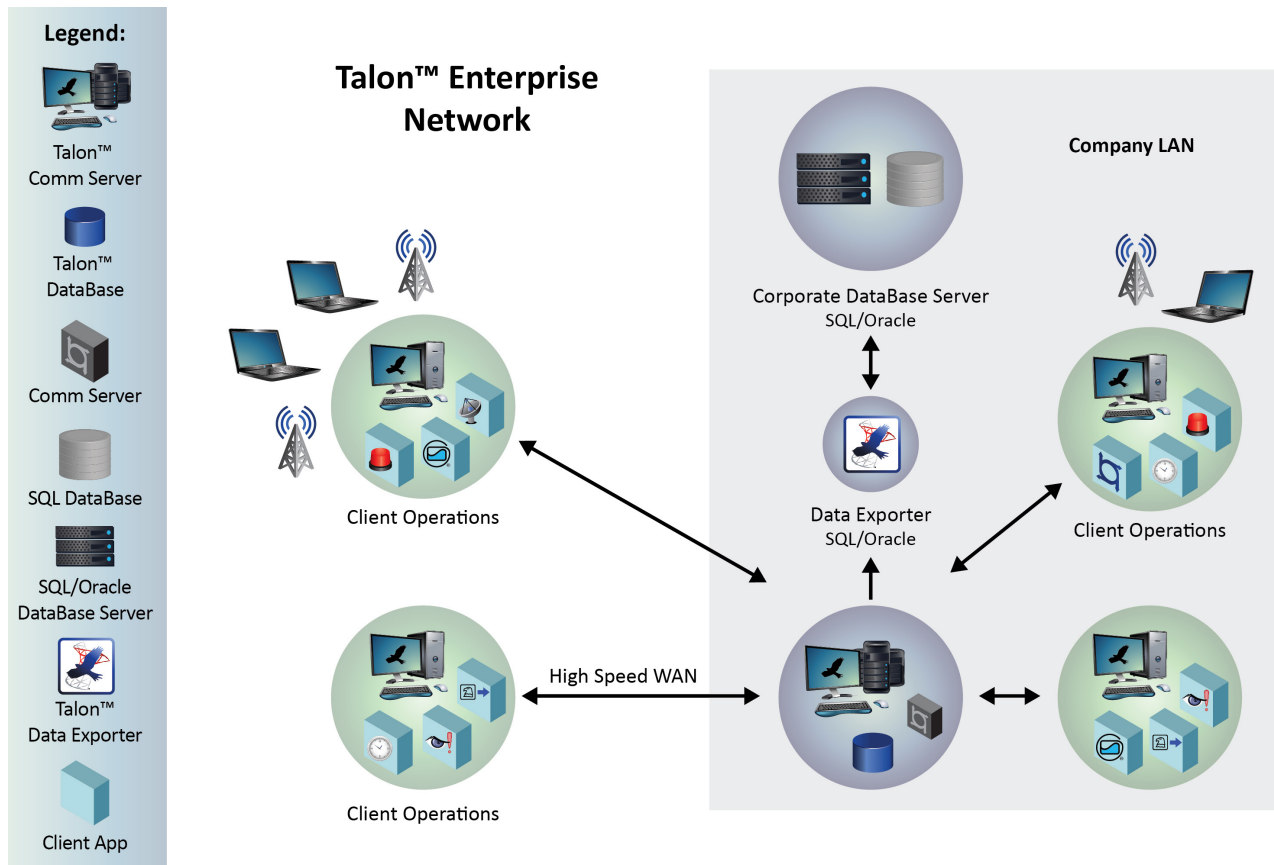
Talon Enterprise™ provides a company-wide server based network platform to perform the functions that are often segregated into separate SCADA and Electronic Measurement Systems. The Talon™ family of software gives the user the ability to create a powerful host platform that meets specific and distributed data collection requirements.

The modular and flexible service-oriented architecture offers the option to purchase only the specific modules needed, and the ability to expand the system with additional features by adding new modules as system requirements change. Software modules can be configured and deployed across either a Wide Area Network (WAN) or Local Area Network (LAN) for central office and/or field operations.

In the current energy industry environment, many companies are scattered across state and international boundaries. Having the ability to distribute Talon Enterprise™ modules across the network infrastructure puts collection and management of the data closer to the source, resulting in improved overall system performance.



# TALON ENTERPRISE™



## Overview:

- Windows® Operating System: Server 2003, 2008, 2012; Windows® 7, 8.1, 10
- Multi-Level User Password Access
- Modular Design for Scalable Deployments
- Communications Server for COMMS Management
- Support for Single Server, Corporate, or Distributed Wide Area Network
- Multi-PC LAN Support Through Drive Mapping
- Client – Server Database Version
- Support for MS SQL® and Oracle®
- Support for Single DB or Distributed Wide Area Networks
- Base Components
  - Desktop Explorer, Scheduler, Reporting Tool and Auto Reporting
  - Process Programming Support

## Embedded Graphics:

- Add Graphic Objects to Create User Screens for Data Presentation
- Add Photos and Diagrams
- Information Grouping

## No Limitations:

- Add Graphics, Live Data and ActiveX Controls to Provide Live Integration to Many Popular Platforms

## Related Services:

- Specification Development
- Custom Screen Design and Report Writing
- System Start-up
- Web Publishing
- Various Levels of Training

# WEB DATA HOSTING

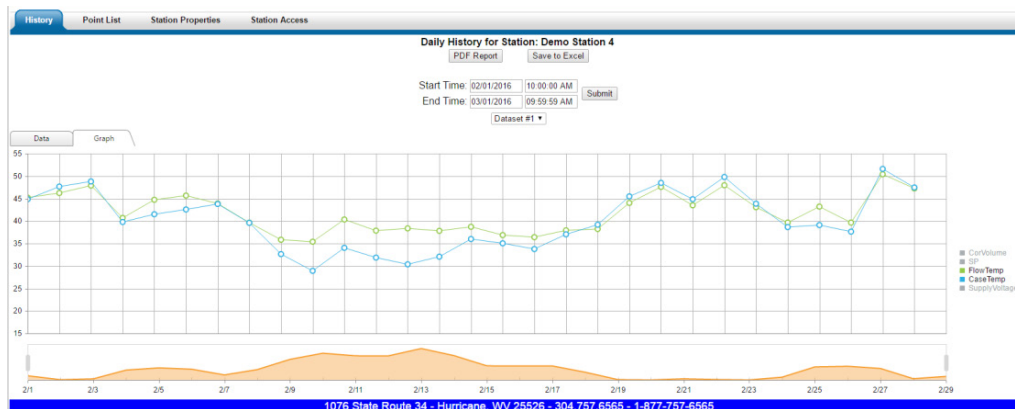
Web-based remote monitoring allows the user to collect critical information from their electronic flow measurement equipment without the need for locally installed systems, saving staffing and maintenance dollars. Eagle Research continues to provide the latest communications options at competitive prices. In addition to the many options available for data sharing, Eagle Research also provides a web data hosting website that allows subscribers to view measurement and other operational data online from any computer or handheld device.

Please contact your sales representative for more information. Follow the link below to see a Web Hosting demo. Log in information: **Username: demo** and **Password: demo**

<http://scada.eagleresearchcorp.com>

LOG OFF STATION LIST

STATION NAME	LAST UPDATE TIME	CURRENT DAY VOLUME	PREV DAY VOLUME	DIFF PRESSURE	PRESSURE	Temperature	VOLTAGE
● Demo Station 1	6/16/16 09:00 AM	33	49		0	0	12
● Demo Station 2	Dataset #1	19	19		60.15	66.19	13.84
	Dataset #2	0	114	0	60.18	60	13.84
	Dataset #3	585	346	3.32			
● Demo Station 3	Dataset #1	5	91.12	0	179.87	60	11.5
	Dataset #2	0	0	1.03	180.01	60	
	Dataset #3	36	36	2.92	181.31	70.88	



- **Graphing** - graphs the available data for the station of interest.
- **Zoom In/Out** - allows for certain areas of specific interest.
- **Panning** - helps move around the data easily.
- **Automatic Scaling** - keeps the data of interest in an easy to read format for evaluation of trends and relationships of the field data.

### Typical Web Data is Updated Four Times a Day to Include:

#### Instantaneous Values:

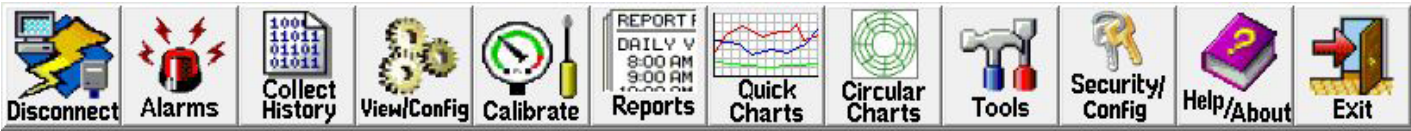
- Flow Rate
- Line Pressure
- Differential Pressure

#### Historical Values:

- Flow Rate
- Volume
- Average DP
- Average Pressure
- Average Temperature
- Instantaneous Voltage

# FIELD MANAGER™ & FIELD MANAGER PLUS™

Field Manager™ is a Windows® based configuration application designed to support all Eagle Research Corporation® field devices on one common platform. Field Manager™ provides an easy to use group of functions to assist the user in setting up and configuring the field device, gathering data, viewing alarms, and calibration. It also features a variety of other useful tools for troubleshooting and configuring. Communication to the field device is through USB, RS232 laptop cable, or using the optional Bluetooth interface. A library of configuration databases simplifies the identification of standard device types in the field. The software matches the field device to a corresponding device type automatically and displays the appropriate set-up forms for the user. Field Manager Plus™ adds circular charting to all of Field Manager's features.

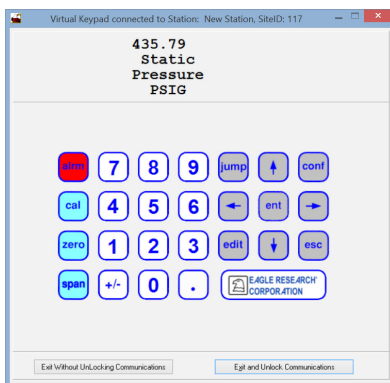


Edit Labels/FKeys	Receive Remote dBase	Edit Station List
Change Site ID	Receive Firmware Version	Multi-Copy Config Files
Virtual Keypad	Send Profile Data	Units Changer
Launch WinTx	Send Remote dBase	Configuration Item List
View Calibration Log	Set Remote Time	EEPROM/Config Editor
Edit Station Name/PH#	Audit Trail/Event Viewer	Change Baud Rate
Reset Audit Trail/Events	Import Station(s)	Data Logger
Export Station(s)	Edit RTU Voice Call List	
Clear Calibration Reports	Database Folder	

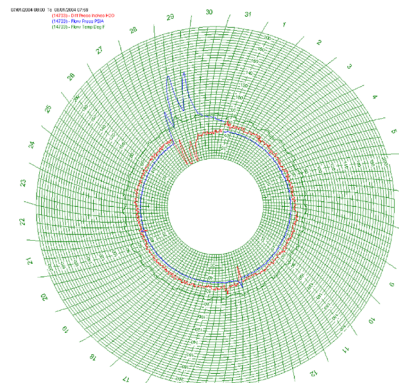
## Features & Benefits

- Auto Unit Identification
- Calibration Wizards
- Simple Historical Data Collection
- Direct, Dial-Up, or TCP/IP Based Connection
- Easy Tab Navigation
- Data Export Synchronization to Talon™ Family of Products
- CSV (Comma Separated Values) Exporter for Historical Records

The Virtual Keypad provides the same access to field device operating and debug modes as the hardware keypad versions. It simulates the keypad and display used by the field device. The Virtual Keypad can be used to execute functions which are normally performed from the field device keypad.



**E-Series™ Virtual Keypad**



**Circular Charting with Field Manager Plus™**

## Virtual Keypad Functions

- Check and/or Clear Alarms
- Access Configuration, Calibration, and Debug Modes
- Access Different Labels Configured in the Field Device
- Work with System Passwords
- View the Firmware Version and Device Serial Number